



STONEWEG

# Rue Emma Kammacher 11

Meyrin (GE)

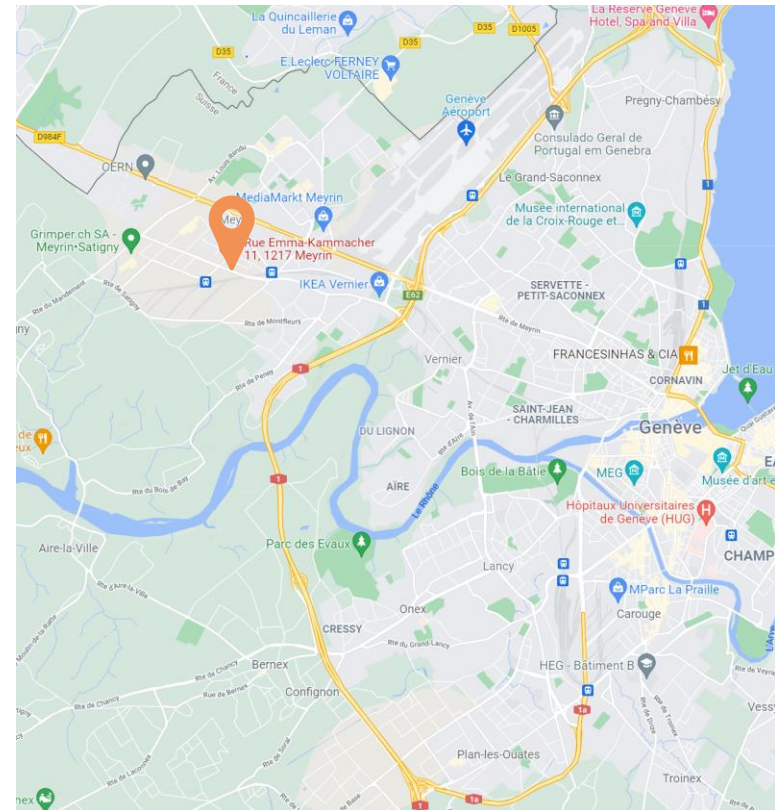
# Bâtiment Logistique et Industriel EK11

## Localisation

<b>Canton</b>	Genève
<b>Ville</b>	Meyrin
<b>Adresse</b>	Rue Emma Kammacher 11

### Accessibilité

- 5 min de l'autoroute A1
- 10 min de l'aéroport international
- 15 min du centre ville
- 5 min à pied de la gare de Meyrin
- Arrêt de bus à venir en face du bâtiment.



# Bâtiment Logistique et Industriel EK11

## Bâtiment

<b>Surfaces Logistiques</b>	Environ 13'500 m <sup>2</sup>
<b>Surfaces mixtes</b>	Environ 4'300 m <sup>2</sup>
<b>Parking</b>	114
<b>Quais</b>	11
<b>Accès de plain pied</b>	Oui
<b>Montes charges</b>	Oui
<b>Début du chantier</b>	Q4 2022
<b>Livraison des surfaces</b>	Q2 2024

# Bâtiment Logistique et Industriel EK11

## Proposition de Loyer

---

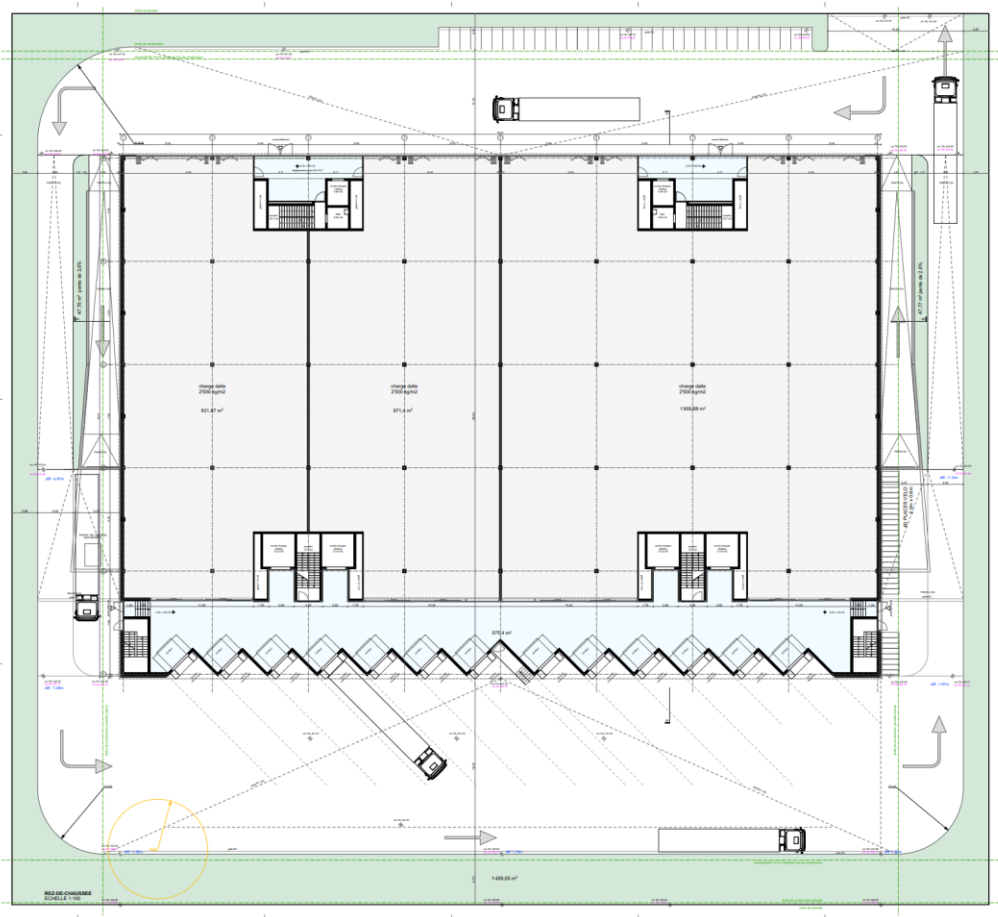
<b>Surfaces logistiques Rez de chaussée Charges</b>	CHF 200.-/m <sup>2</sup> /an/HC/HTVA CHF 20.-/m <sup>2</sup> /an
<b>Surfaces administratives – Mezzanine Charges</b>	CHF 200.-/m <sup>2</sup> /an/HC/HTVA CHF 40.-/m <sup>2</sup> /an
<b>Surfaces logistiques et industrielles – 1<sup>er</sup> étage Charges</b>	CHF 180.-/m <sup>2</sup> /an/HC/HTVA CHF 20.-/m <sup>2</sup> /an
<b>Surfaces logistiques et industrielles – 2<sup>ème</sup> étage Charges</b>	CHF 170.-/m <sup>2</sup> /an/HC/HTVA CHF 20.-/m <sup>2</sup> /an
<b>Surfaces administratives – Attique Charges</b>	CHF 250.-/m <sup>2</sup> /an/HC/HTVA CHF 40.-/m <sup>2</sup> /an
<b>Place de parc</b>	CHF 200.-/place/mois

---

# Bâtiment Logistique et Industriel EK11

## Plan

Rez de chaussée



### Caractéristiques

**Hauteur sous plafond** 7m

**Charge au sol** 2.5T

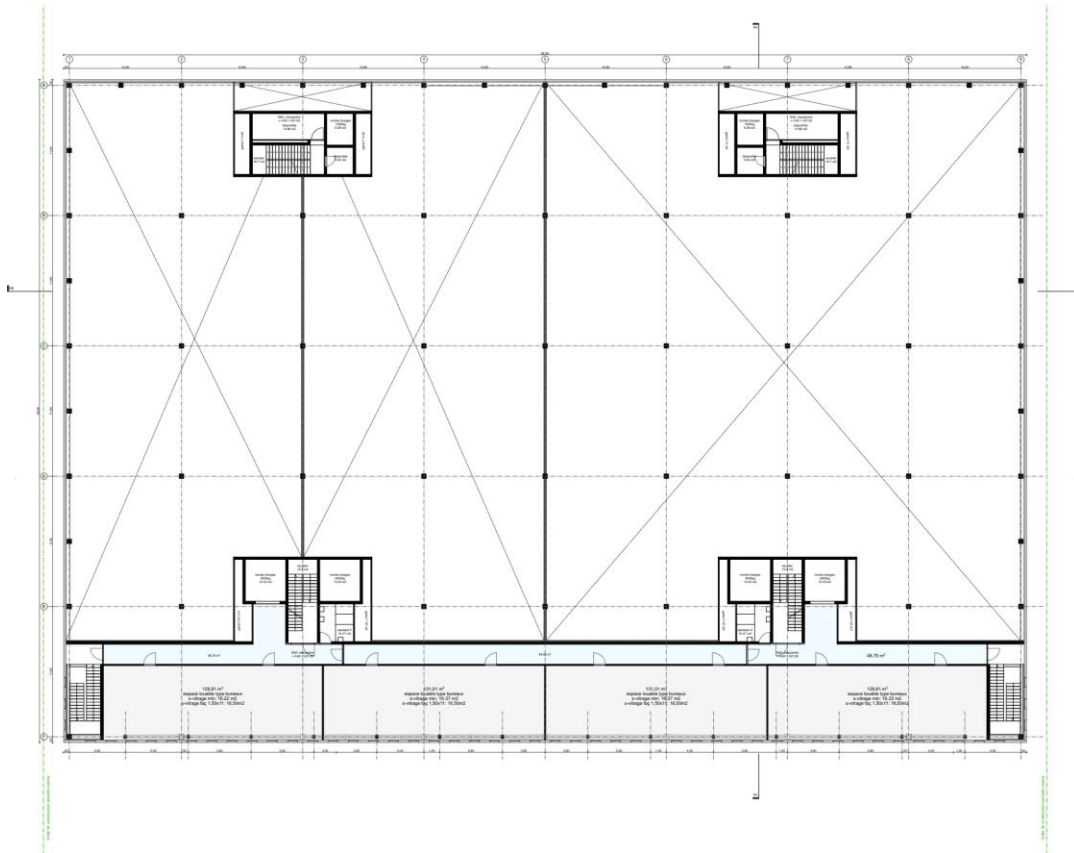
**Surface** +/- 4'400 m2

**Techniques** A définir

# Bâtiment Logistique et Industriel EK11

## Plan

Mezzanine Rez de chaussée

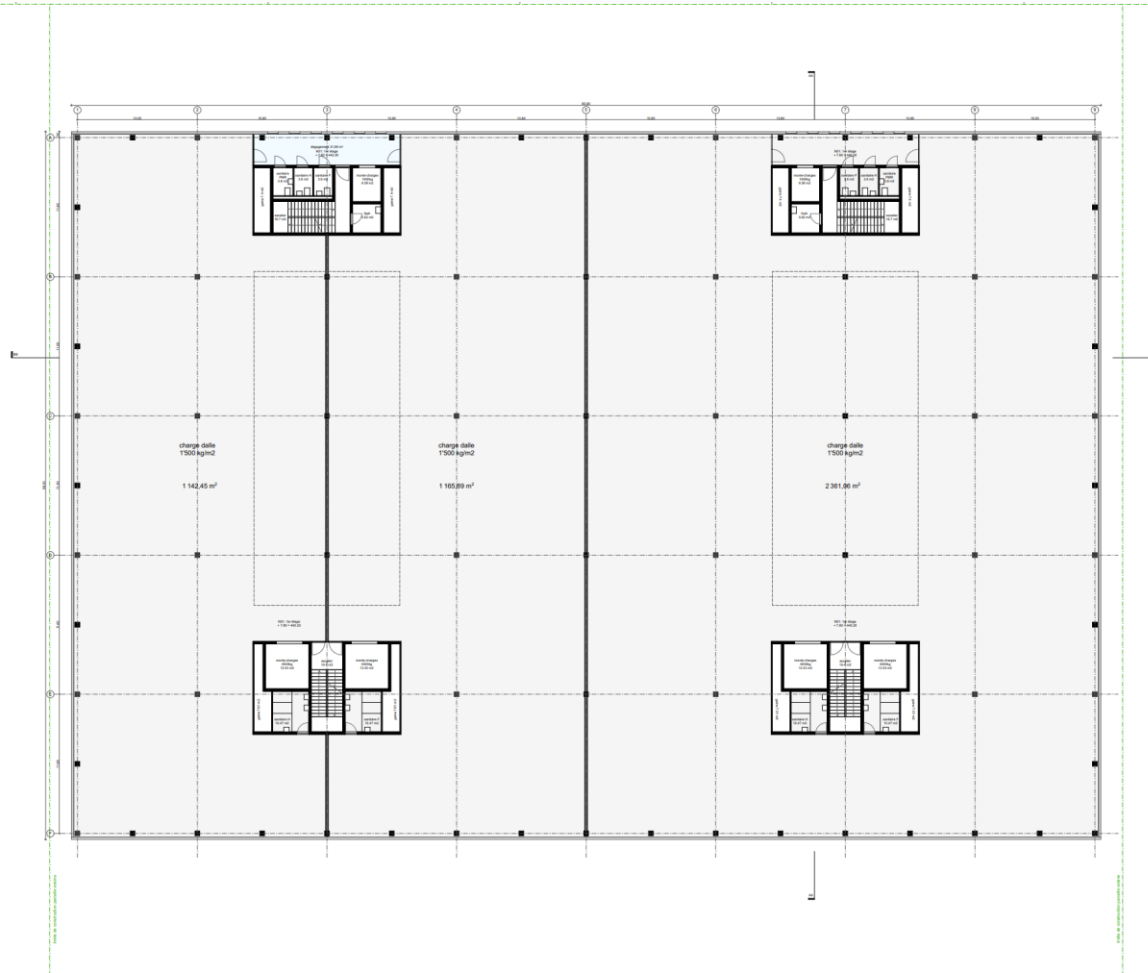


### Caractéristiques

<b>Hauteur sous plafond</b>	3m
<b>Charge au sol</b>	300 kg/m <sup>2</sup>
<b>Surface</b>	-/+ 550 m <sup>2</sup>
<b>Techniques</b>	A définir

# Bâtiment Logistique et Industriel EK11

## Plan 1<sup>er</sup> étage



### Caractéristiques

Hauteur sous plafond	4m90
Charge au sol	1.5 T
Surface	+/- 4'700 m <sup>2</sup>
Techniques	A définir

# Bâtiment Logistique et Industriel EK11

## Plan 2<sup>ème</sup> étage



### Caractéristiques

**Hauteur sous plafond** 4m90

**Charge au sol** 1T

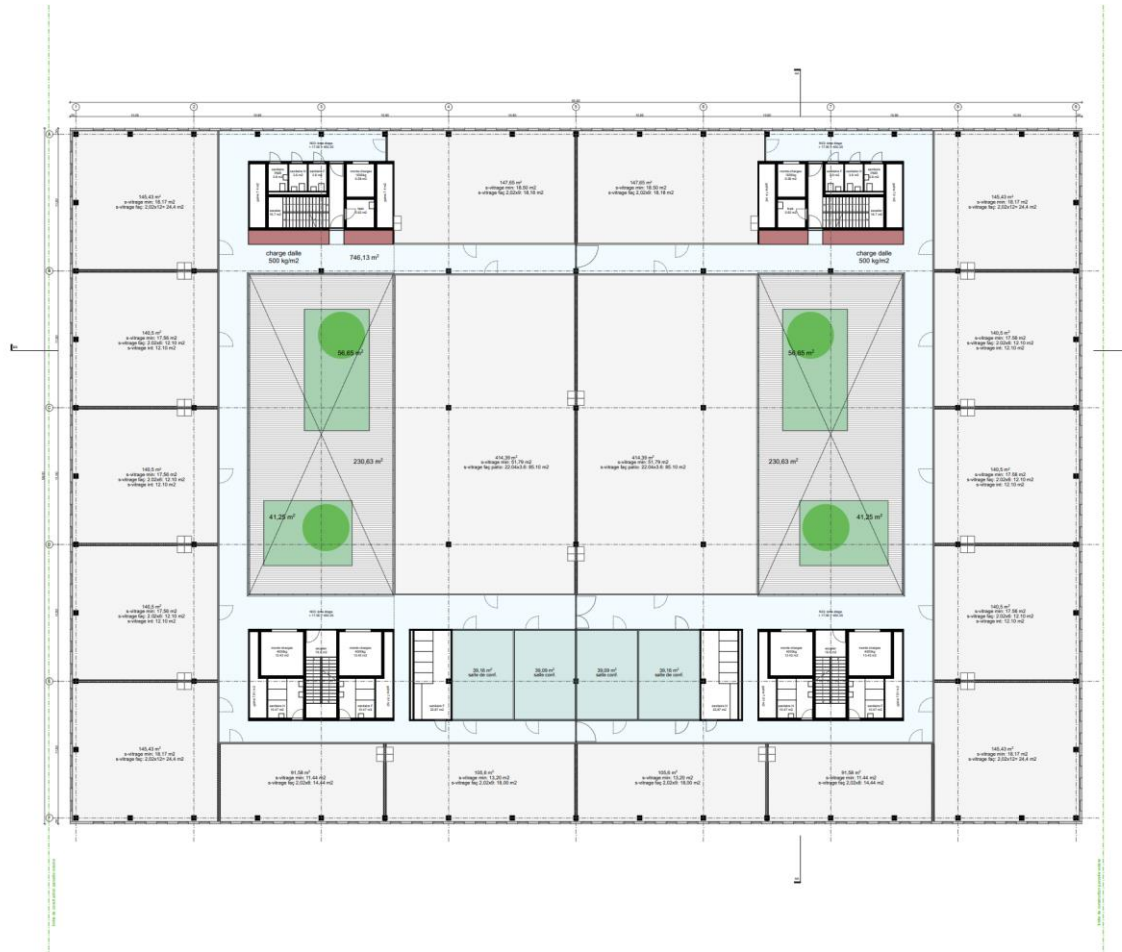
**Surface** +/- 4'500 m<sup>2</sup>

**Techniques** A définir



# Bâtiment Logistique et Industriel EK11

## Plan Attique



### Caractéristiques

**Hauteur sous plafond** 3m

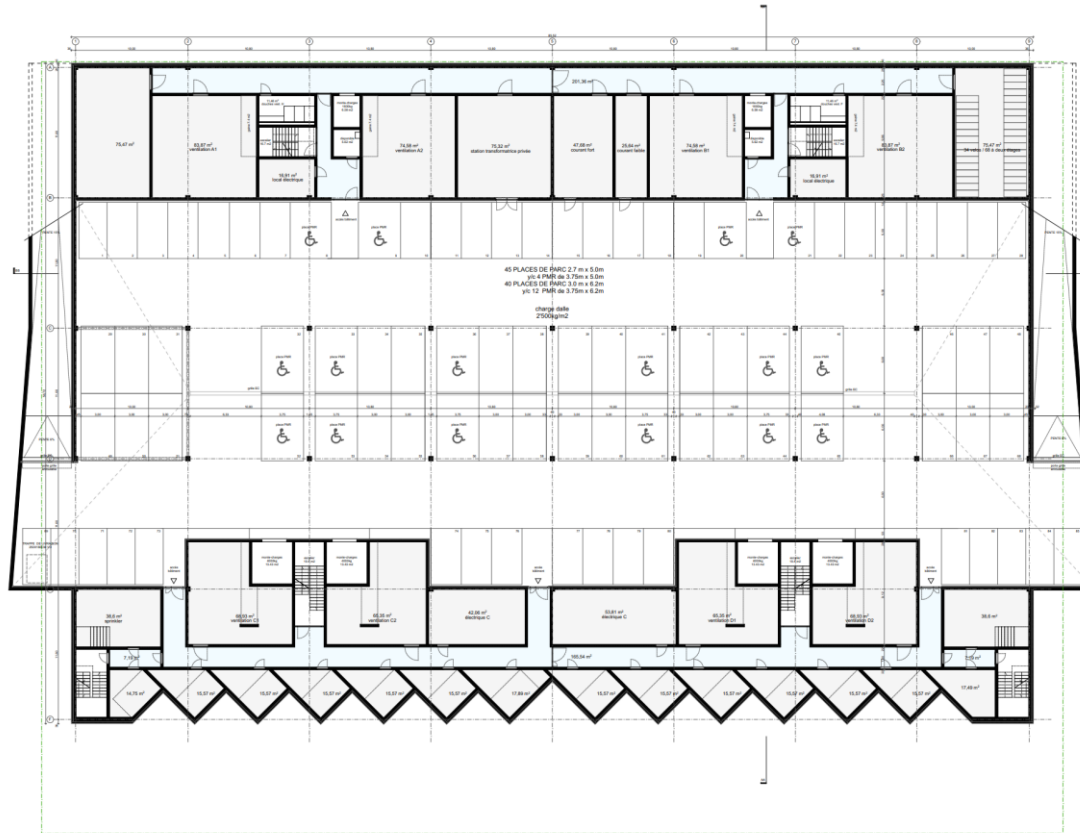
**Charge au sol** 300 kg

**Surface** +/- 4'500 m<sup>2</sup>

**Techniques** A définir

# Bâtiment Logistique et Industriel EK11

## Plan Sous-sol



# Bâtiment Logistique et Industriel EK11

---

## Photos



# Bâtiment Logistique et Industriel EK11

## Photos





# Bâtiment Logistique et Industriel EK11

## Photos



**N'hésitez pas à nous contacter pour plus d'informations,**

**Caroline Melis**  
Letting Manager

+41(0)22 552 43 53

caroline.melis@stoneweg.com

---

#### **Legal Disclaimer / Important Information**

This document ("Document") is provided by Stoneweg SA and/or its affiliates ("Stoneweg") for information purposes only and does not constitute an offer or a solicitation in particular in countries where such offer or solicitation is unlawful. This Document is confidential and intended for professional and institutional investors only. It shall not be copied, reproduced, distributed or passed to any third party without Stoneweg prior written consent. Any information given in this Document may be subject to change or update without prior notice.

This Document has been thoroughly researched and verified by Stoneweg. However, Stoneweg makes no warranty of any kind, express or implied, without limitation as to its content, accuracy or reliability.

The information contained in this Document cannot be understood as provision of investment services. If you wish to obtain investment services, please contact our office for advice. Use of the information contained in this Document is solely at your risk. Neither Stoneweg nor any of its affiliates, shareholders, directors, managers or employees accept any responsibility whatsoever for any direct or indirect loss or damage sustained or incurred by your use of this Document or by any decision you would take based on information contained in this Document. Investment involves risks and every investment strategy has its own risks. Please note that the value of your investment may rise or fall, subject to developments on financial markets, amongst other financial and/or non-financial factors, and that you may not be able to recover your initial investment. Historical return is not indicative of present or future performance and shall in no event be deemed as such.

Copyright © 2021 Stoneweg SA. All rights reserved.